

DRAGON

PRODUCTS, LTD.

Beaumont, La Porte, Silsbee, Victoria, Odessa TX • Lathrop, CA • Akron, IN

500 BARREL CORRUGATED WALL LIQUID STORAGE TANK SPECIFICATIONS INTERNAL MANIFOLD

<u>FLOOR:</u>	1/4 Plate, 4" V-bottom with integral formed side Channels
<u>FLOOR SUPPORT:</u>	10" channel longitudinal runners with 8" channel and formed 1/4 plate channel crossmembers.
<u>WALLS:</u>	1/4 Plate solid welded, corrugated steel, corrugations 15" on center
<u>ROOF:</u>	Flat top, 1/4 solid welded with channel supports outside
<u>FRONT/REAR:</u>	1/4 plate solid welded, corrugated steel, 10" radius at vertical outside corners
<u>DRAIN/FILL:</u>	4" floor drain at rear end, 3" fill pipe to roof at rear, (4) 4" suction lines in front with 8" pipe internal connection and turn down to sump
<u>GEL LINE:</u>	4" mid high connection on curb side, 4" internal pipe with 3/4" holes located on 12" centers towards floor center, capped on rear end (ends near side manway)
<u>MANWAY:</u>	21" manway on front and side, 3 – non sealed hatches on roof
<u>PICK UP:</u>	Standard 5th wheel king pin
<u>WELDS:</u>	All welds continuous except substructure crossmembers

MEMBER OF THE MODERN GROUP / CORPORATE OFFICE

Express Mail: 1655 Louisiana, Beaumont, Texas 77701 • Regular Mail: P.O. Box 790, Beaumont, Texas 77704
(409) 833-2665 • 1-800-231-8198 • FAX (409) 833-3170 • email: sales@modernusa.com

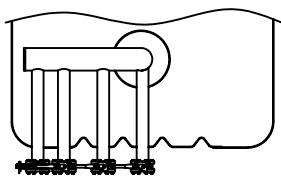
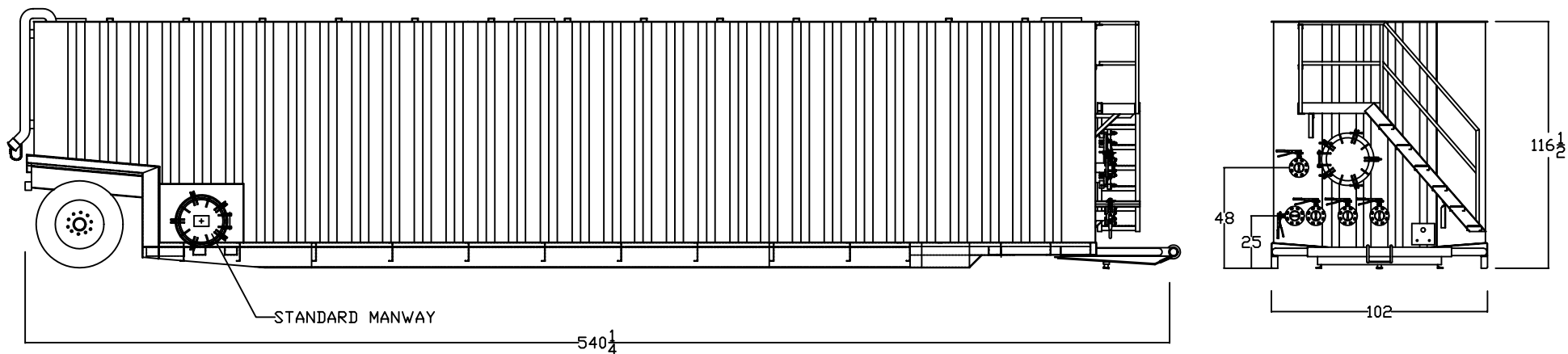
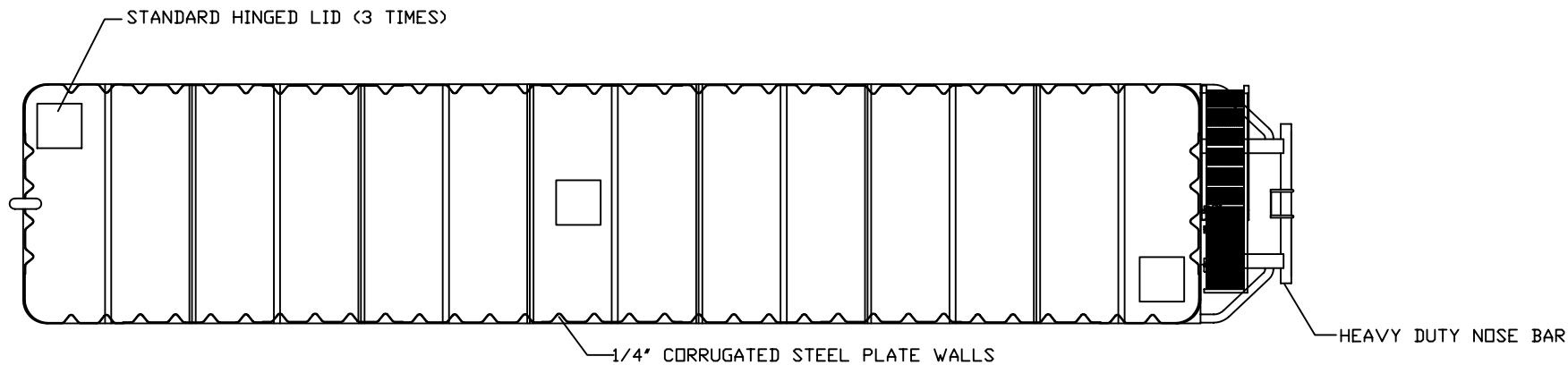
AXLE: 25,000 lb axle with air brakes, 11.00X22.5 tires on steel disc wheels

ACCESS: Front stairway

FINISH: Interior: steel grit blasted to SP 10, lined with 10% solids chemical resistant epoxy liner, 20 mil DFT minimum, high voltage spark test inspection
Exterior: steel grit blasted to SP6, color coated with rust inhibiting polyurethane paint

HYDROTESTING: Full capacity static test

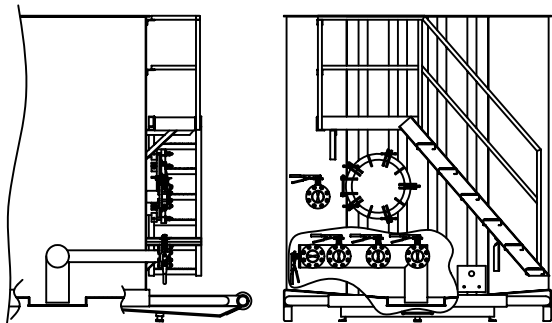
DIMENSIONS: Over all; 45' long, 8'-6" wide, 10' high 500 barrel capacity



STANDARD FEATURES:

- SIDES: 1/4" CORRUGATED STEEL PLATE TANK CONSTRUCTION
- FLOOR: 1/4" STEEL PLATE TANK CONSTRUCTION
- KINGPIN: 1" GROUND CLEARANCE WHEN READY TO WORK
- V-BOTTOM FLOOR FOR BETTER DRAINAGE
- HEAVY DUTY NOSEBAR ASSEMBLY
- HUTCH 9700 SUSPENSION
- 22,500 LB AXLE, 5" ROUND
- 11.00 X 22.5 TIRES AND STEEL WHEELS
- AIR BRAKES
- 21" MANWAY

NOTE:
 SOME DETAILS NOT SHOWN IN ALL VIEWS
 ALL D.O.T. REQUIRED LIGHTING INCLUDED
 OVERALL DIMENSIONS ARE NOMINAL



INTERNAL MANIFOLD DETAIL

PROPERTY OF MODERN MFG., INC.		BEAUMONT TEXAS
SCALE N.T.S.	***SALES***	DWG BY L.S.H.
DATE 5/15/03		REV.
LIQUID STORAGE TANK WITH INTERNAL MANIFOLD		
500 BARREL		DWG NO. 00000412